

## Ulazni podaci - Konstrukcija

Tabela materijala

No	Naziv materijala	E[kN/m <sup>2</sup> ]	$\mu$	$\gamma$ [kN/m <sup>3</sup> ]	$\alpha$ [1/C]	Em[kN/m <sup>2</sup> ]	$\mu$ m
1	Beton MB 30	3.150e+7	0.20	25.00	1.000e-5	3.150e+7	0.20

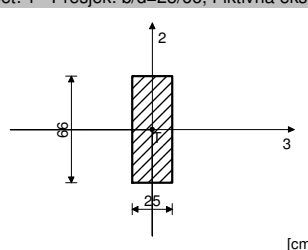
Setovi ploča

No	d[m]	e[m]	Materijal	Tip proračuna	Ortotropija	E2[kN/m <sup>2</sup> ]	G[kN/m <sup>2</sup> ]	$\alpha$
<1>	0.250	0.125	1	Tanka ploča	Izotropna			
<2>	0.200	0.100	1	Tanka ploča	Izotropna			
ST: Em x 1, E x 0.01, $\gamma$ x 1; SE: Em x 1, E x 1, $\gamma$ x 1;								
<3>	0.150	0.075	1	Tanka ploča	Izotropna			
ST: Em x 1, E x 0.01, $\gamma$ x 1; SE: Em x 1, E x 1, $\gamma$ x 1;								

Setovi greda

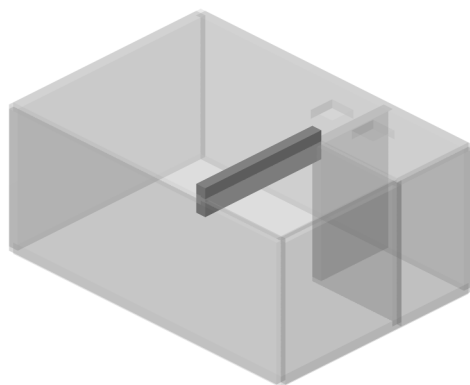
Set: 1 Presjek: b/d=25/66, Fiktivna ekscentričnost

Mat.	A1	A2	A3	I1	I2	I3
1 - Beton MB 30	1.650e-1	1.375e-1	1.375e-1	2.619e-3	8.594e-4	5.990e-3

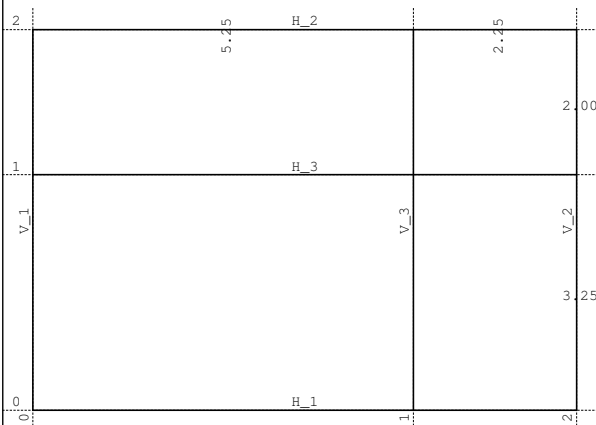


Setovi površinskih ležajeva

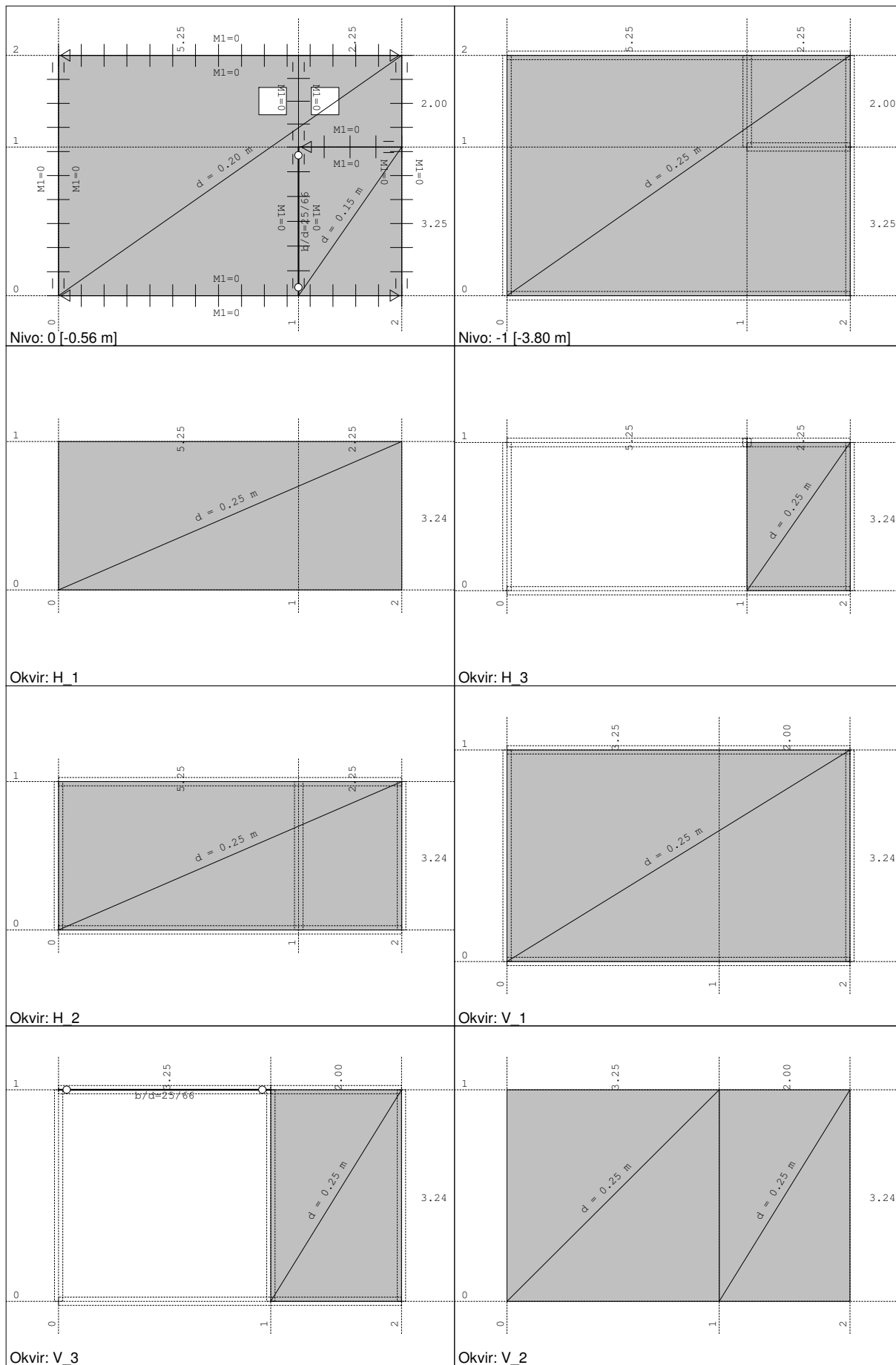
Set	K,R1	K,R2	K,R3
1	1.000e+10	1.000e+10	1.000e+4



Izometrija



Dispozicija okvira

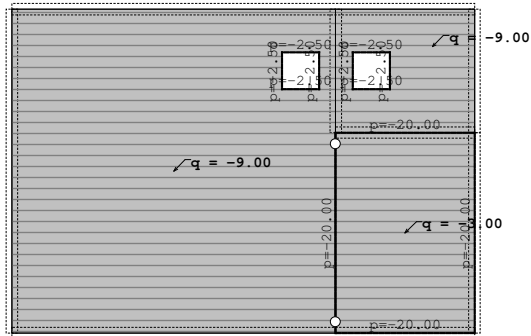


## Ulazni podaci - Opterećenje

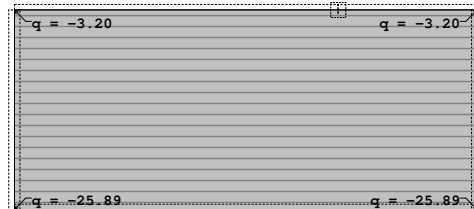
Lista slučajeva opterećenja

LC	Naziv	pX [kN]	pY [kN]	pZ [kN]
1	STALNO (g)	0.00	0.00	-1582.09
2	TLO	-0.00	77.76	0.00
3	VODA	0.00	0.00	0.00
4	KORISNO	0.00	0.00	-535.36
5	Komb.: 1.35xI+1.35xII+1.5xIII+1.5xIV	0.00	104.98	-2938.87

Opt. 1: STALNO (g)

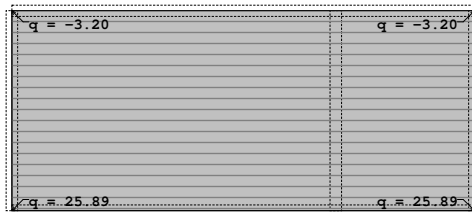


Opt. 2: TLO



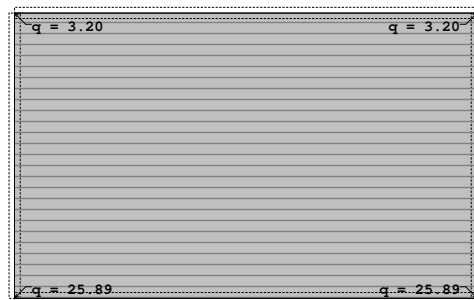
Nivo: 0 [-0.56 m]

Opt. 2: TLO



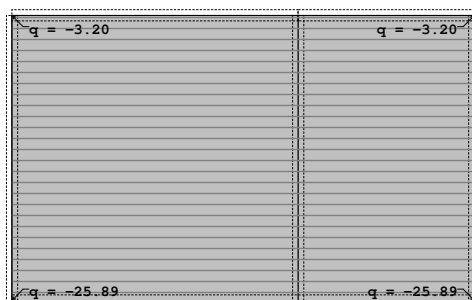
Okvir: H 1

Opt. 2: TLO



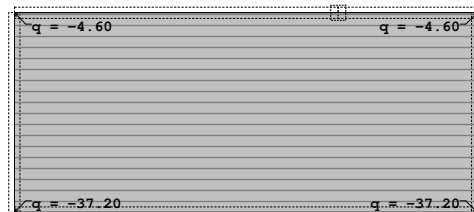
Okvir: H 2

Opt. 2: TLO



Okvir: V 1

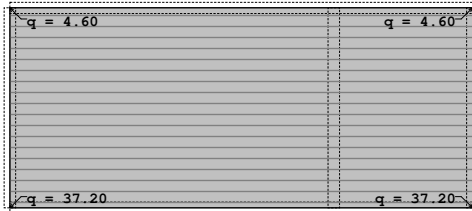
Opt. 3: VODA



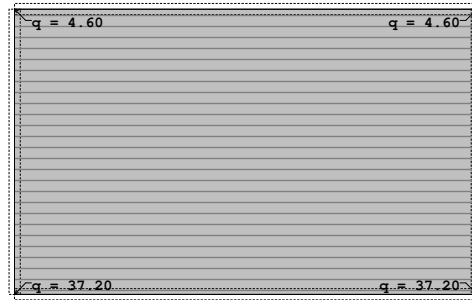
Okvir: V 2

Okvir: H 1

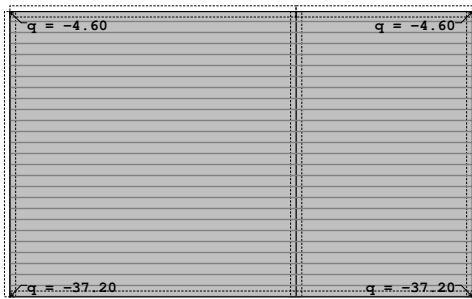
Opt. 3: VODA



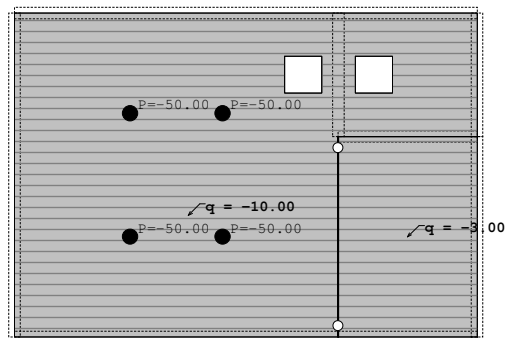
Opt. 3: VODA



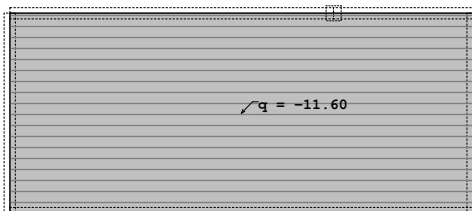
Okvir: H 2  
Opt. 3: VODA



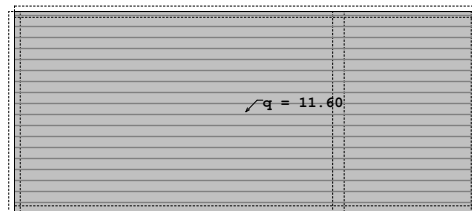
Okvir: V 1  
Opt. 4: KORISNO



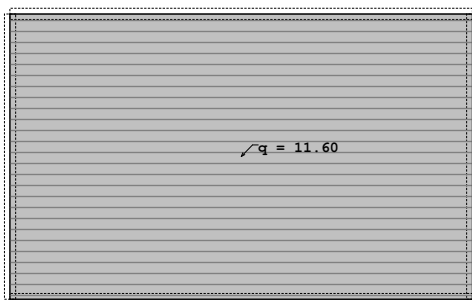
Okvir: V 2  
Opt. 4: KORISNO



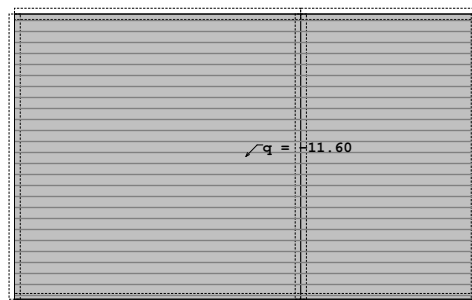
Nivo: 0 [-0.56 m]  
Opt. 4: KORISNO



Okvir: H 1  
Opt. 4: KORISNO



Okvir: H 2  
Opt. 4: KORISNO

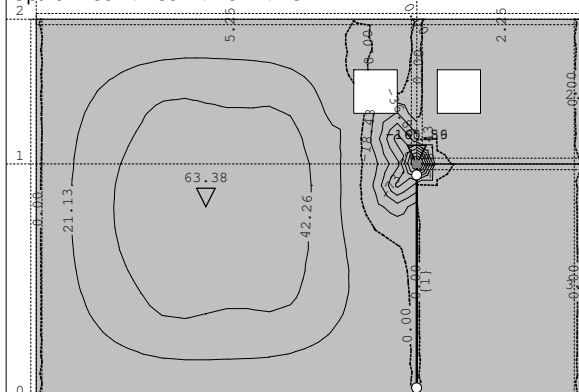


Okvir: V 1

Okvir: V 2

## Statički proračun

Opt. 5: 1.35xI+1.35xII+1.5xIII+1.5xIV

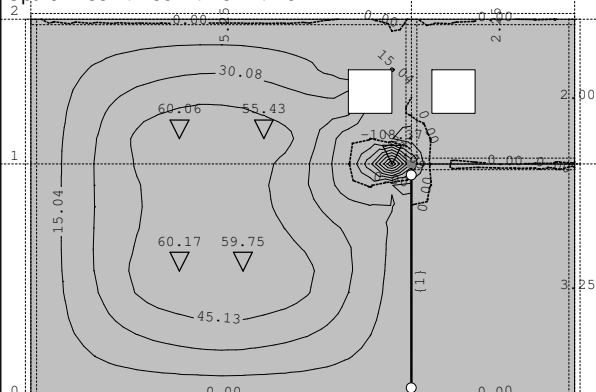


Nivo: 0 [-0.56 m]

Utjecaji u ploči: max  $M_x$  = 63.38 / min  $M_x$  = -165.86 kNm/m

Opt. 5: 1.35xI+1.35xII+1.5xIII+1.5xIV

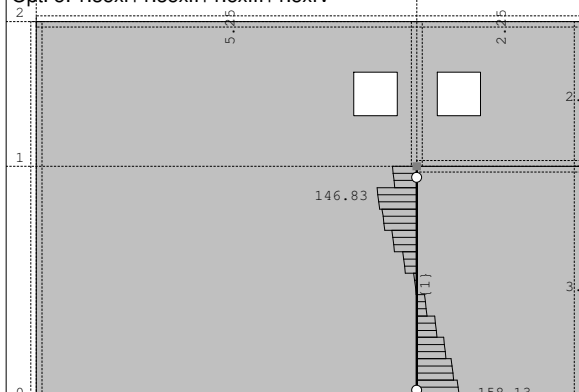
Opt. 5: 1.35xI+1.35xII+1.5xIII+1.5xIV



Nivo: 0 [-0.56 m]

Utjecaji u ploči: max  $M_y$  = 60.17 / min  $M_y$  = -108.37 kNm/m

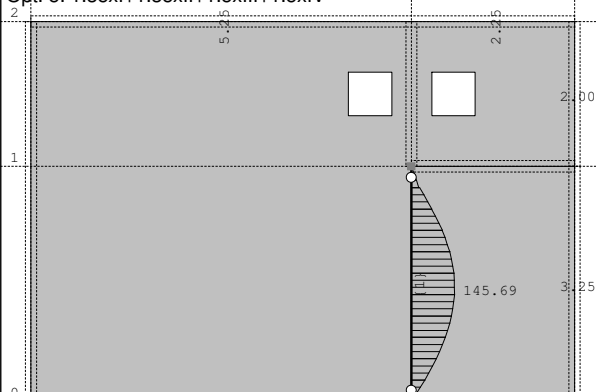
Opt. 5: 1.35xI+1.35xII+1.5xIII+1.5xIV



Nivo: 0 [-0.56 m]

Utjecaji u gredi: max  $T_2$  = 146.83 / min  $T_2$  = -158.13 kN

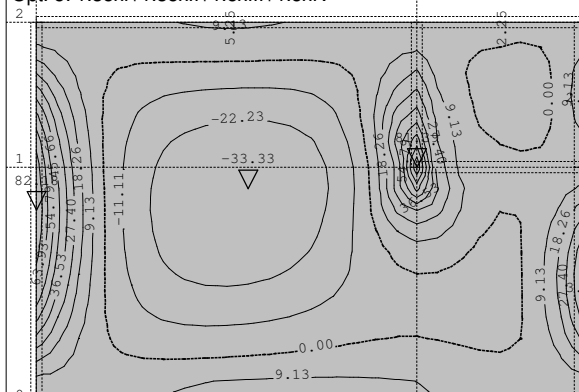
Opt. 5: 1.35xI+1.35xII+1.5xIII+1.5xIV



Nivo: 0 [-0.56 m]

Utjecaji u gredi: max  $M_3$  = 145.69 / min  $M_3$  = 0.00 kNm

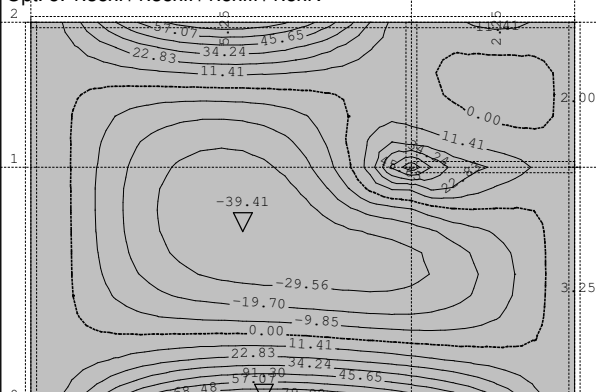
Opt. 5: 1.35xI+1.35xII+1.5xIII+1.5xIV



Nivo: -1 [-3.80 m]

Utjecaji u ploči: max  $M_x$  = 82.18 / min  $M_x$  = -33.33 kNm/m

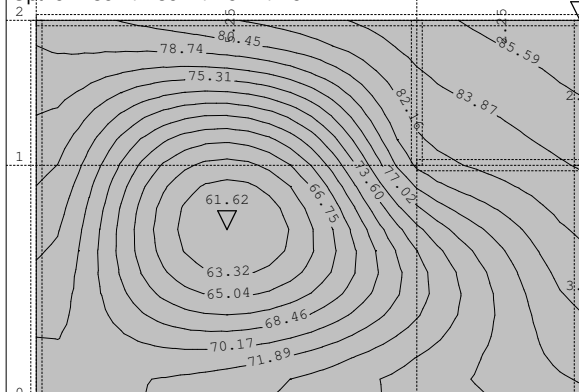
Opt. 5: 1.35xI+1.35xII+1.5xIII+1.5xIV



Nivo: -1 [-3.80 m]

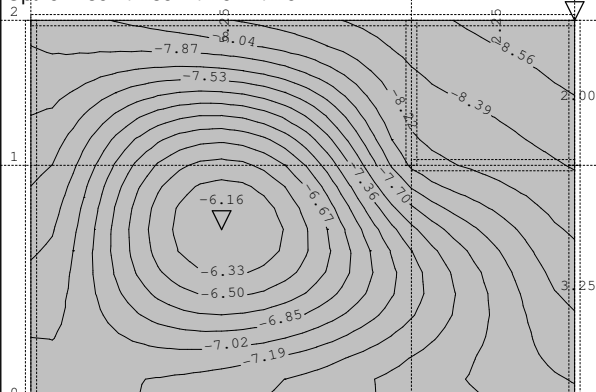
Utjecaji u ploči: max  $M_y$  = 91.30 / min  $M_y$  = -39.41 kNm/m

Opt. 5: 1.35xI+1.35xII+1.5xIII+1.5xIV



Nivo: -1 [-3.80 m]

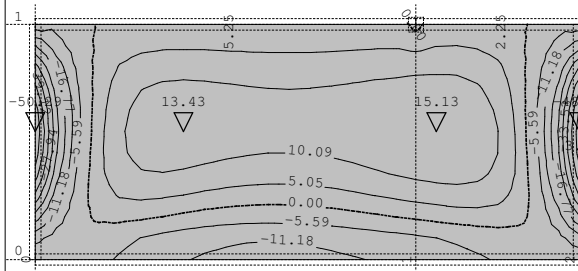
Utjecaji u pov. ležaju: max  $\sigma_{tla}$  = 87.29 / min  $\sigma_{tla}$  = 61.62 kN/m<sup>2</sup>



Nivo: -1 [-3.80 m]

Utjecaji u pov. ležaju: max  $\sigma_{tla}$  = -6.16 / min  $\sigma_{tla}$  = -8.73 m / 1000

Opt. 5: 1.35xI+1.35xII+1.5xIII+1.5xIV

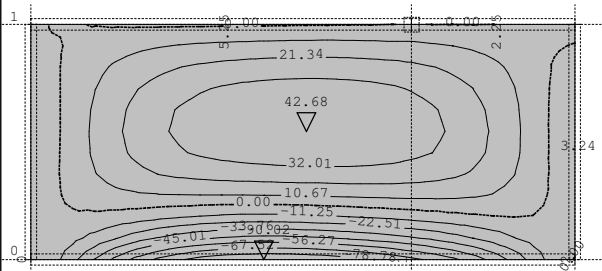


Okvir: H\_1

Utjecaji u ploči: max  $M_x = 15.13$  / min  $M_x = -50.29$  kNm/m

Opt. 5: 1.35xI+1.35xII+1.5xIII+1.5xIV

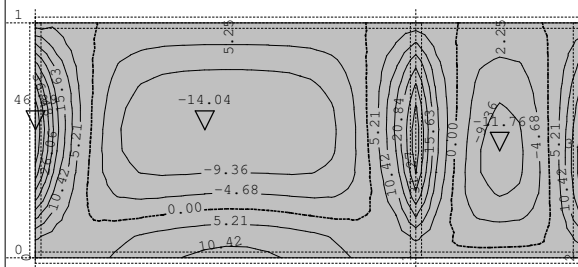
Opt. 5: 1.35xI+1.35xII+1.5xIII+1.5xIV



Okvir: H\_1

Utjecaji u ploči: max  $M_y = 42.68$  / min  $M_y = -90.02$  kNm/m

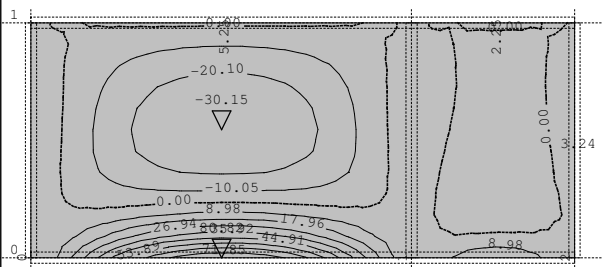
Opt. 5: 1.35xI+1.35xII+1.5xIII+1.5xIV



Okvir: H\_2

Utjecaji u ploči: max  $M_x = 46.89$  / min  $M_x = -14.04$  kNm/m

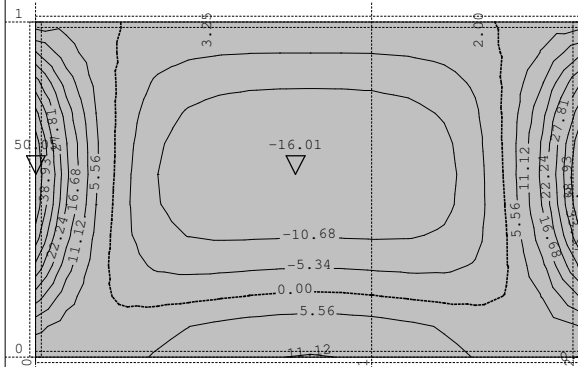
Opt. 5: 1.35xI+1.35xII+1.5xIII+1.5xIV



Okvir: H\_2

Utjecaji u ploči: max  $M_y = 80.82$  / min  $M_y = -30.15$  kNm/m

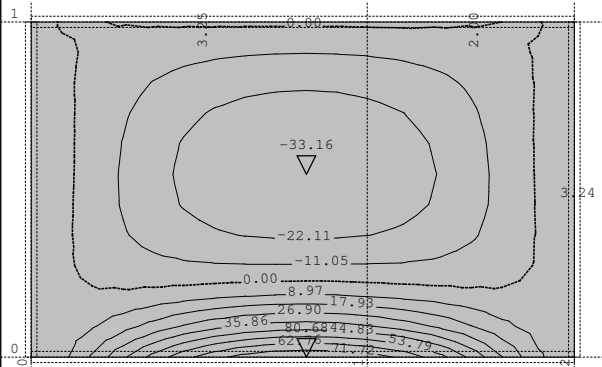
Opt. 5: 1.35xI+1.35xII+1.5xIII+1.5xIV



Okvir: V\_1

Utjecaji u ploči: max  $M_x = 50.05$  / min  $M_x = -16.01$  kNm/m

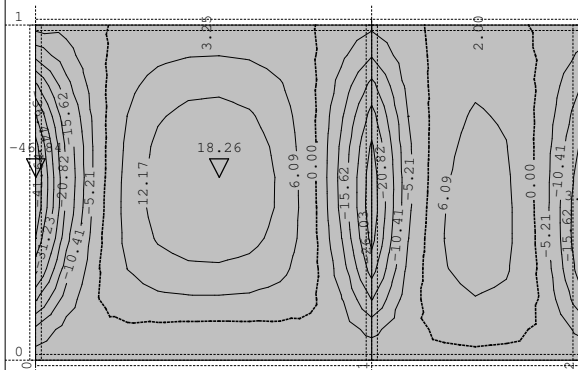
Opt. 5: 1.35xI+1.35xII+1.5xIII+1.5xIV



Okvir: V\_1

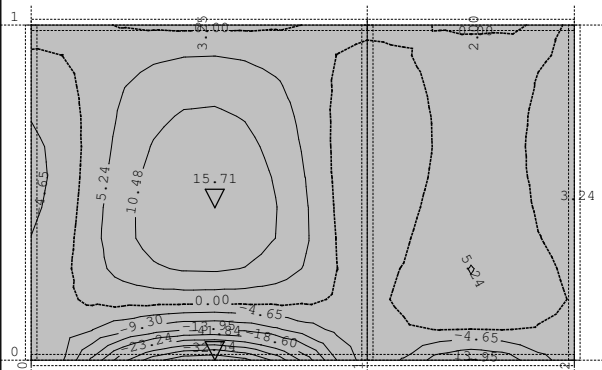
Utjecaji u ploči: max  $M_y = 80.68$  / min  $M_y = -33.16$  kNm/m

Opt. 5: 1.35xI+1.35xII+1.5xIII+1.5xIV



Okvir: V\_2

Utjecaji u ploči: max  $M_x = 18.26$  / min  $M_x = -46.84$  kNm/m

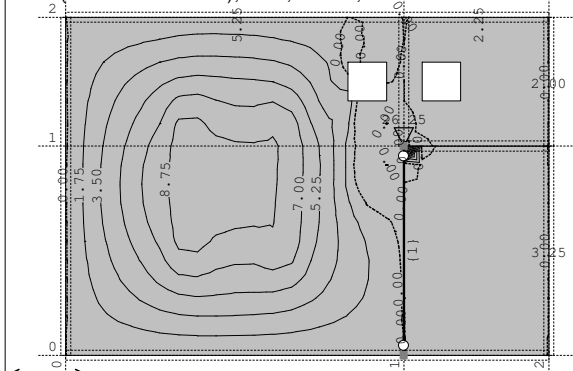


Okvir: V\_2

Utjecaji u ploči: max  $M_y = 15.71$  / min  $M_y = -41.84$  kNm/m

## Dimenzioniranje (beton)

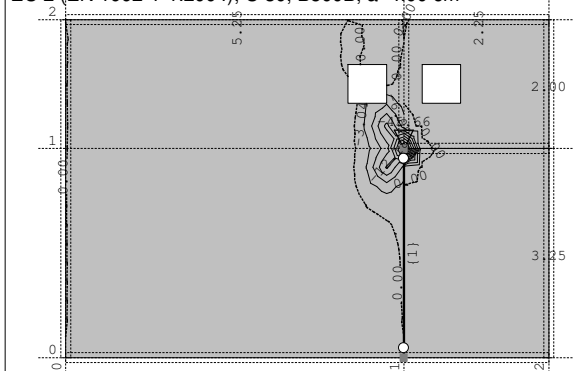
Mjerodavno opterećenje: 1.35xI+1.35xII+1.50xIII+1.50xIV  
EC 2 (EN 1992-1-1:2004), C 30, B500B, a=4.00 cm



Nivo: 0 [-0.56 m]

Aa - d.zona - Pramac 1 - max Aa1,d= 26.25 cm<sup>2</sup>/m

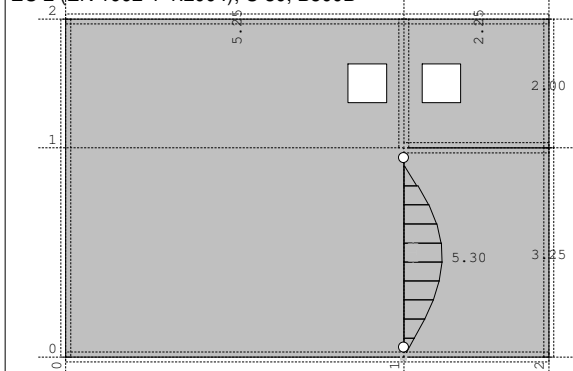
Mjerodavno opterećenje: 1.35xI+1.35xII+1.50xIII+1.50xIV  
EC 2 (EN 1992-1-1:2004), C 30, B500B, a=4.00 cm



Nivo: 0 [-0.56 m]

Aa - g.zona - Pramac 1 - max Aa1,g= -45.66 cm<sup>2</sup>/m

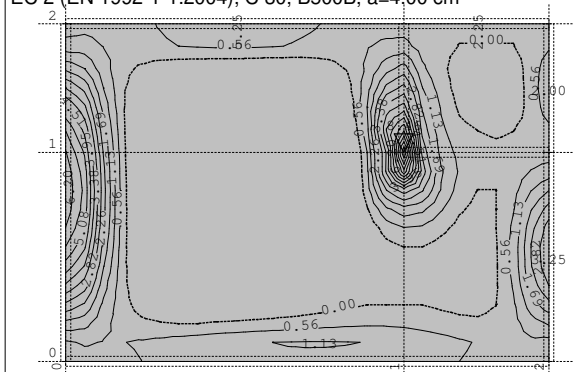
Mjerodavno opterećenje: 1.35xI+1.35xII+1.50xIII+1.50xIV  
EC 2 (EN 1992-1-1:2004), C 30, B500B



Nivo: 0 [-0.56 m]

Armatura u gredama: max Aa2/Aa1= 5.30 cm<sup>2</sup>

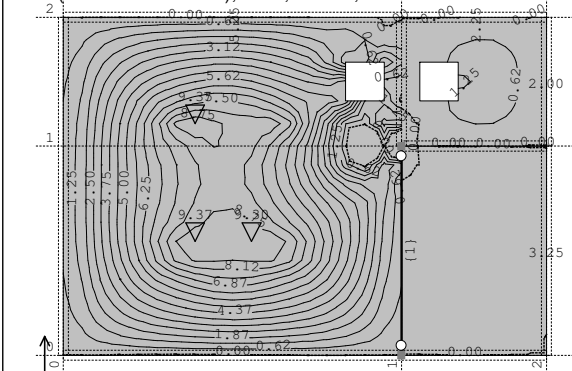
Mjerodavno opterećenje: 1.35xI+1.35xII+1.50xIII+1.50xIV  
EC 2 (EN 1992-1-1:2004), C 30, B500B, a=4.00 cm



Nivo: -1 [-3.80 m]

Aa - d.zona - Pramac 1 - max Aa1,d= 8.46 cm<sup>2</sup>/m

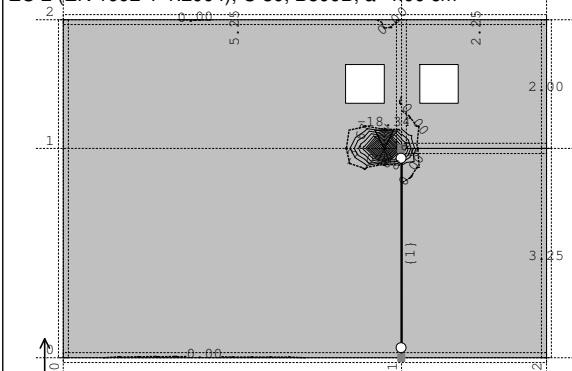
Mjerodavno opterećenje: 1.35xI+1.35xII+1.50xIII+1.50xIV  
EC 2 (EN 1992-1-1:2004), C 30, B500B, a=4.00 cm



Nivo: 0 [-0.56 m]

Aa - d.zona - Pramac 2 - max Aa2,d= 9.37 cm<sup>2</sup>/m

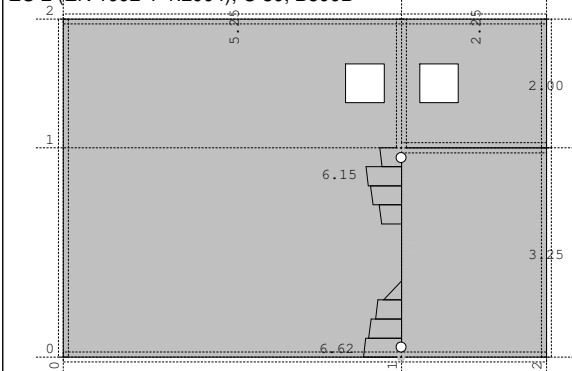
Mjerodavno opterećenje: 1.35xI+1.35xII+1.50xIII+1.50xIV  
EC 2 (EN 1992-1-1:2004), C 30, B500B, a=4.00 cm



Nivo: 0 [-0.56 m]

Aa - g.zona - Pramac 2 - max Aa2,g= -18.34 cm<sup>2</sup>/m

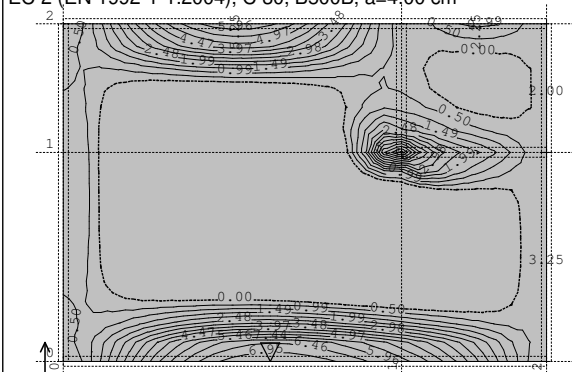
Mjerodavno opterećenje: 1.35xI+1.35xII+1.50xIII+1.50xIV  
EC 2 (EN 1992-1-1:2004), C 30, B500B



Nivo: 0 [-0.56 m]

Armatura u gredama: max Asw= 6.62 cm<sup>2</sup>

Mjerodavno opterećenje: 1.35xI+1.35xII+1.50xIII+1.50xIV  
EC 2 (EN 1992-1-1:2004), C 30, B500B, a=4.00 cm



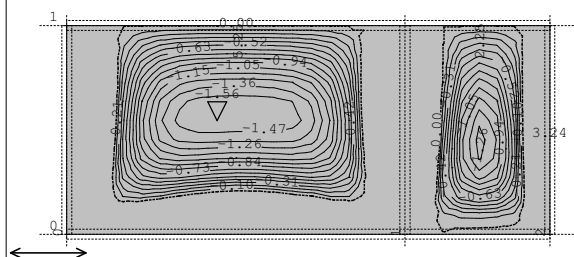
Nivo: -1 [-3.80 m]

Aa - d.zona - Pramac 2 - max Aa2,d= 7.44 cm<sup>2</sup>/m

Registered to KONUS d.o.o.



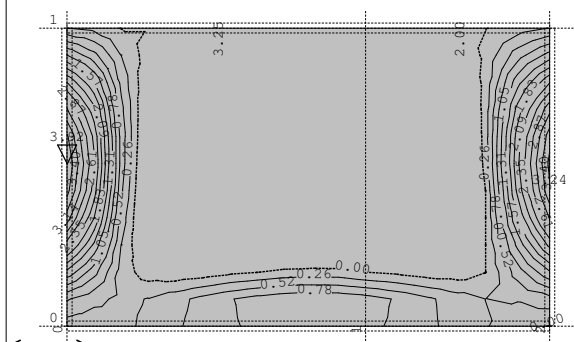
Mjerodavno opterećenje: 1.35xI+1.35xII+1.50xIII+1.50xIV  
EC 2 (EN 1992-1-1:2004), C 30, B500B, a=4.00 cm



Okvir: H\_2

Aa - g.zona - Pramac 1 - max Aa1,g= -1.56 cm²/m

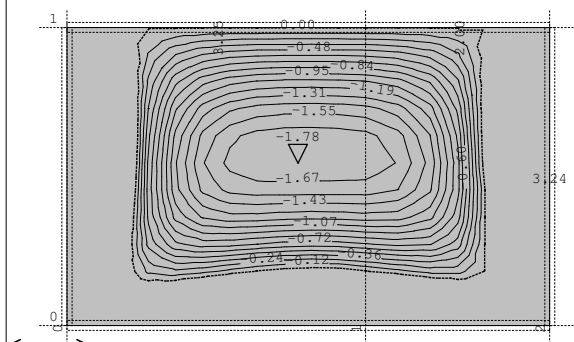
Mjerodavno opterećenje: 1.35xI+1.35xII+1.50xIII+1.50xIV  
EC 2 (EN 1992-1-1:2004), C 30, B500B, a=4.00 cm



Okvir: V\_1

Aa - d.zona - Pramac 1 - max Aa1,d= 3.92 cm²/m

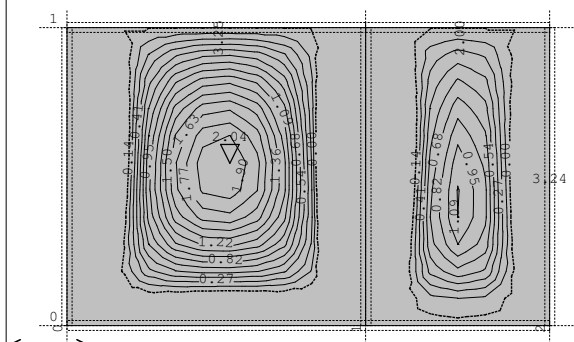
Mjerodavno opterećenje: 1.35xI+1.35xII+1.50xIII+1.50xIV  
EC 2 (EN 1992-1-1:2004), C 30, B500B, a=4.00 cm



Okvir: V\_1

Aa - g.zona - Pramac 1 - max Aa1,g= -1.78 cm²/m

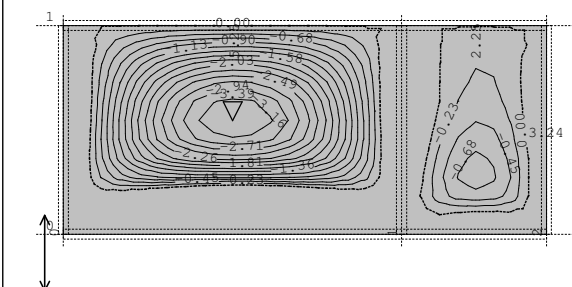
Mjerodavno opterećenje: 1.35xI+1.35xII+1.50xIII+1.50xIV  
EC 2 (EN 1992-1-1:2004), C 30, B500B, a=4.00 cm



Okvir: V\_2

Aa - d.zona - Pramac 1 - max Aa1,d= 2.04 cm²/m

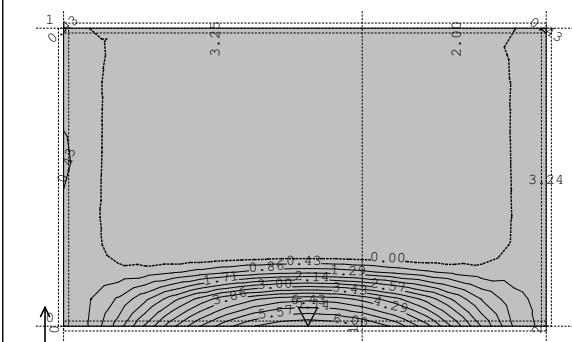
Mjerodavno opterećenje: 1.35xI+1.35xII+1.50xIII+1.50xIV  
EC 2 (EN 1992-1-1:2004), C 30, B500B, a=4.00 cm



Okvir: H\_2

Aa - g.zona - Pramac 2 - max Aa2,g= -3.39 cm²/m

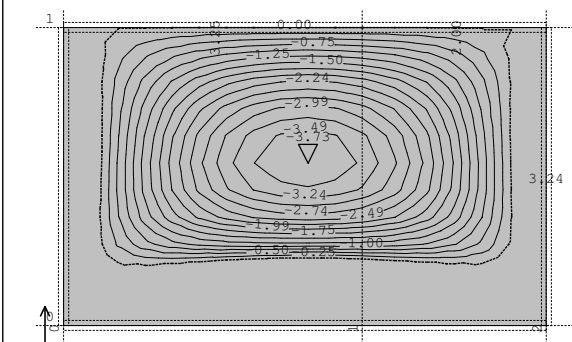
Mjerodavno opterećenje: 1.35xI+1.35xII+1.50xIII+1.50xIV  
EC 2 (EN 1992-1-1:2004), C 30, B500B, a=4.00 cm



Okvir: V\_1

Aa - d.zona - Pramac 2 - max Aa2,d= 6.43 cm²/m

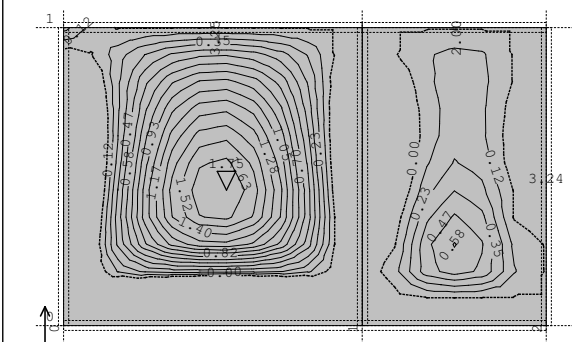
Mjerodavno opterećenje: 1.35xI+1.35xII+1.50xIII+1.50xIV  
EC 2 (EN 1992-1-1:2004), C 30, B500B, a=4.00 cm



Okvir: V\_1

Aa - g.zona - Pramac 2 - max Aa2,g= -3.73 cm²/m

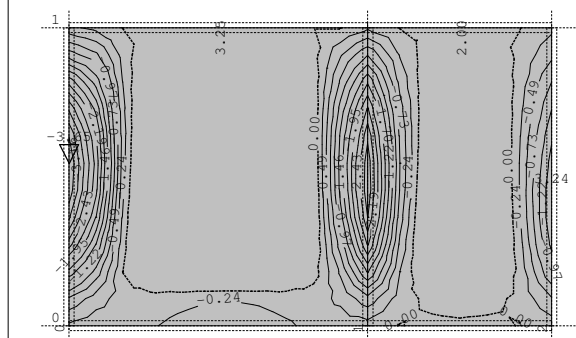
Mjerodavno opterećenje: 1.35xI+1.35xII+1.50xIII+1.50xIV  
EC 2 (EN 1992-1-1:2004), C 30, B500B, a=4.00 cm



Okvir: V\_2

Aa - d.zona - Pramac 2 - max Aa2,d= 1.75 cm²/m

Mjerodavno opterećenje: 1.35xI+1.35xII+1.50xIII+1.50xIV  
EC 2 (EN 1992-1-1:2004), C 30, B500B, a=4.00 cm



Okvir: V\_2  
Aa - g.zona - Pravic 1 - max Aa1,g= -3.65 cm<sup>2</sup>/m

Mjerodavno opterećenje: 1.35xI+1.35xII+1.50xIII+1.50xIV  
EC 2 (EN 1992-1-1:2004), C 30, B500B, a=4.00 cm

